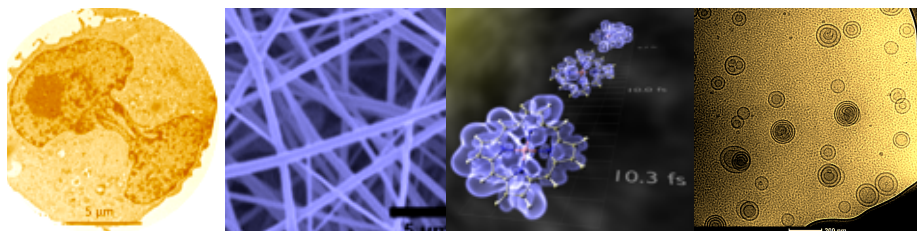




DISCOVER YOUR CHEMISTRY

GRADUATE STUDIES PROGRAM

INTERDISCIPLINARY RESEARCH. CUTTING EDGE TECHNOLOGY.



The LSU Department of Chemistry is a leading research and teaching-intensive program within the largest public institution in the state of Louisiana.

Our faculty and students are working in some of the most exciting areas of modern chemistry, and we are one of the best-equipped chemistry departments in the nation with facilities that include NMR, XRD, TEM, mass spectrometry, light scattering, microscopy, spectroscopy, polymer characterization, and computational simulation.

Explore our campus and uncover new paths that can take you wherever you want to go. Discover LSU.

FALL 2020 EXTENDED APPLICATION DEADLINE IS NOW JULY 15

We will also accept applications for students interested in starting in the Spring 2021.

- Excellent research opportunities in areas of organic, inorganic, analytical, macromolecular, and physical chemistry.
- Competitive stipend and paid tuition.
- Large and diverse group of graduate students with a student: faculty ratio of 4:1.
- 45% of students on research assistantships.
- Average time to completion of PhD is 5.5 years.
- Leading producer of women and African American PhDs in the nation.
- Average \$27 million in total funding for the past 5 years.
- Graduates work in industry, academia, and government.
- Application fee waivers available.

Meet us for our Virtual Coffee Hour

every Thursday from May 21 to July 9, 2020
@ 2 PM (CDT) on Zoom
(Meeting ID: 962 0069 9860)

For additional information, contact
gradchem@lsu.edu or visit chemistry.lsu.edu.